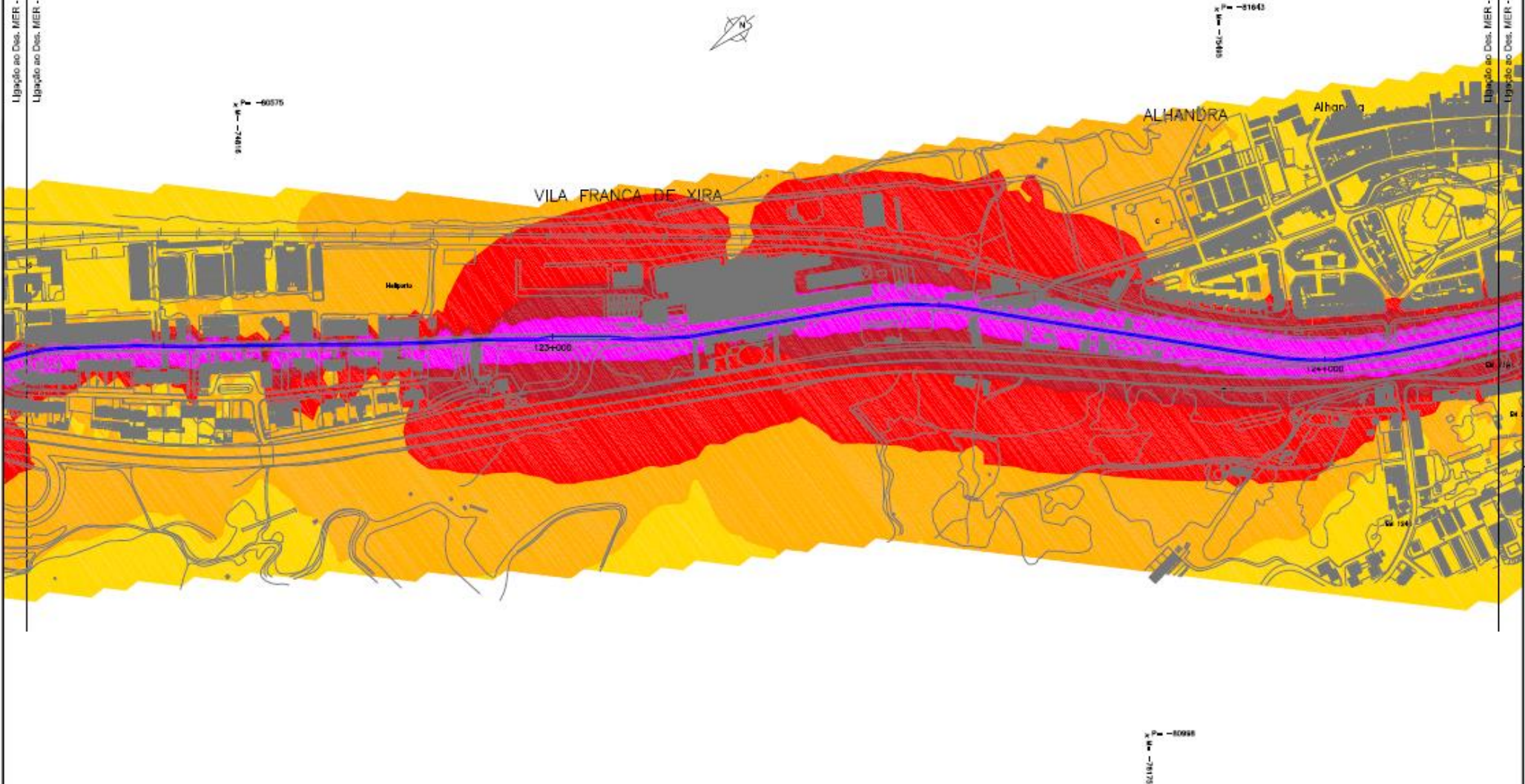


LEGENDA

	Lden ≤ 55 dB(A)
	55 < Lden ≤ 60 dB(A)
	60 < Lden ≤ 65 dB(A)
	65 < Lden ≤ 70 dB(A)
	Lden > 70 dB(A)
	Eixos da Via em Estudo

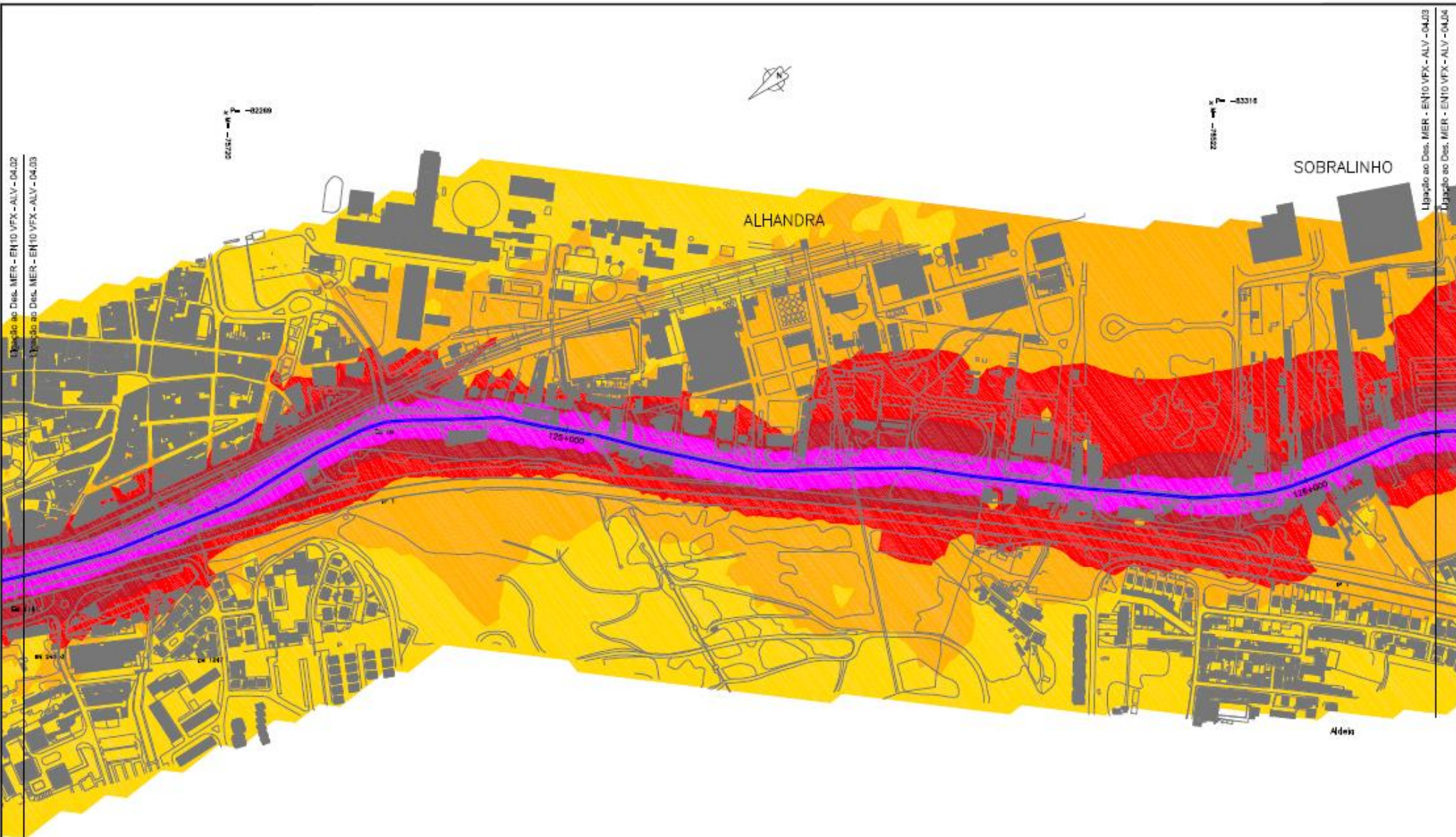


LEGENDA

	Lden ≤ 55 dB(A)
	55 < Lden ≤ 60 dB(A)
	60 < Lden ≤ 65 dB(A)
	65 < Lden ≤ 70 dB(A)
	Lden > 70 dB(A)
	Eixos da Via em Estudo

União do Des. MER - EN10 VFX - ALV - 04.02
 União do Des. MER - EN10 VFX - ALV - 04.03

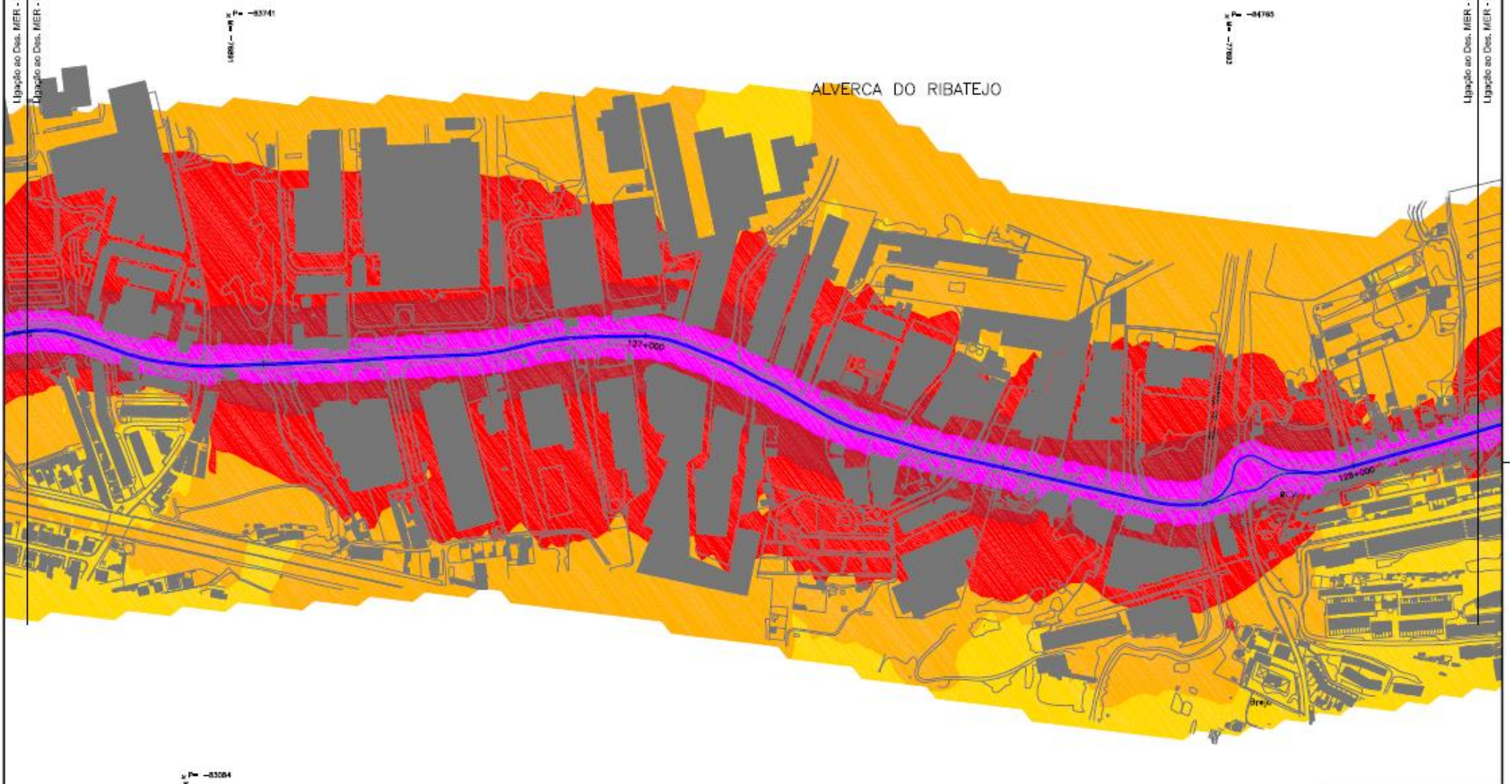
SISTEMA DE COORDENADAS UTM, 18°E



LEGENDA

	Lden ≤ 55 dB(A)
	55 < Lden ≤ 60 dB(A)
	60 < Lden ≤ 65 dB(A)
	65 < Lden ≤ 70 dB(A)
	Lden > 70 dB(A)
	Eixos da Via em Estudo

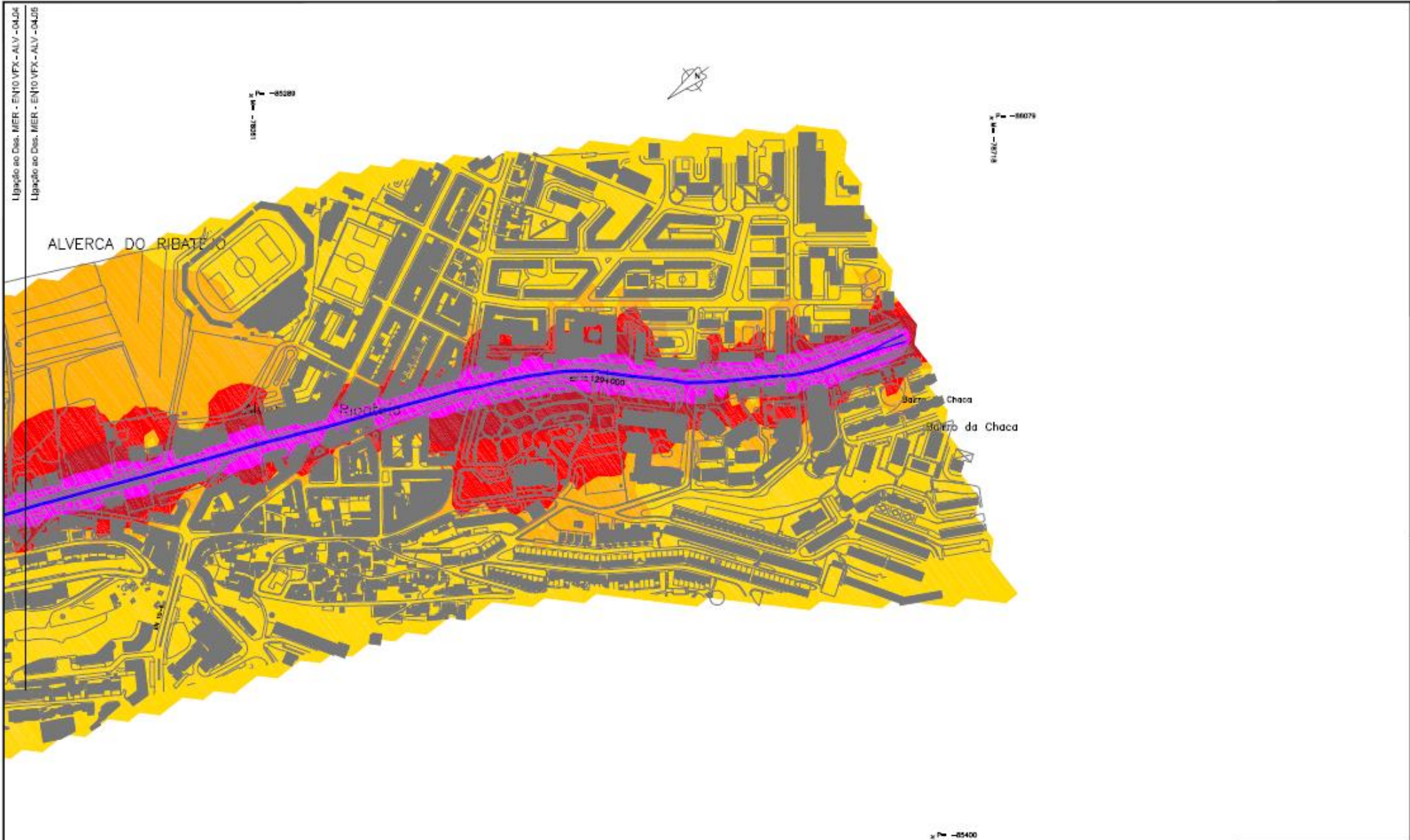
União do Des. MER - EN10 VFX - ALV - 04.02
 União do Des. MER - EN10 VFX - ALV - 04.03



ALVERCA DO RIBATEJO

LEGENDA

	Lden ≤ 55 dB(A)
	55 < Lden ≤ 60 dB(A)
	60 < Lden ≤ 65 dB(A)
	65 < Lden ≤ 70 dB(A)
	Lden > 70 dB(A)
	Eixos da Via em Estudo



LEGENDA

	Lden ≤ 55 dB(A)
	55 < Lden ≤ 60 dB(A)
	60 < Lden ≤ 65 dB(A)
	65 < Lden ≤ 70 dB(A)
	Lden > 70 dB(A)
	Eixos da Via em Estudo